

Roller Chain With U Type Attachments 2

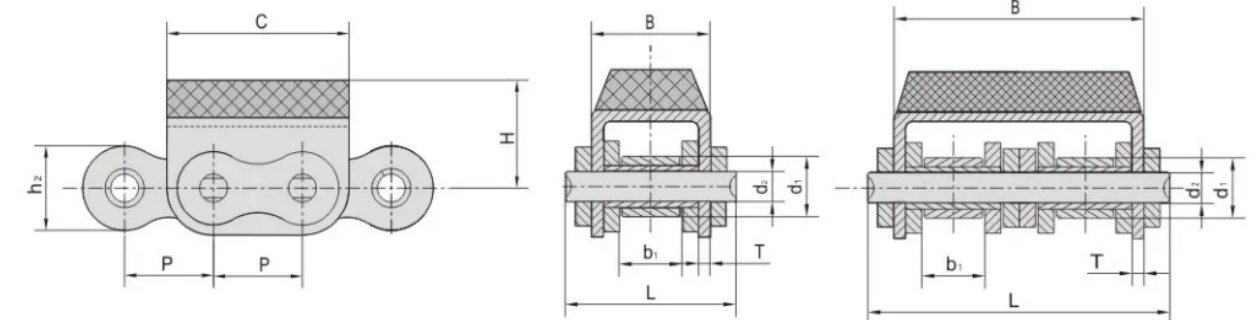


Features & Advantages



- These chain parts undergo proper processes like quenching, tempering, and surface treatments to maximize strength, wear resistance, and fatigue resistance

Technical Specifications



带 G1 附件
With G1 profile

带 G2 附件
With G2 profile

Email | sales@hdsusa.us

Tel | +1 (832) 808-5116 Tel | +1 (832) 808-5164



HDS Chain No.		08B-G1	08B-G2	10B-G1	10B-G2	12B-G1	12B-G2	16A-G1	16B-G1	20B-G1	24B-G1
Pitch	P/mm	12.7	12.7	12.7	15.875	19.05	19.05	25.4	25.4	31.75	38.1
Roller Diameter	d1(Max)	8.51	8.51	8.51	10.16	12.07	12.07	15.88	15.88	19.05	25.04
Width Between Inner Plates	b1(Min)	7.75	7.75	7.75	9.65	11.68	11.68	15.75	15.75	19.56	25.4
Pin Diameter	d2(Max)	4.45	4.45	4.45	5.08	5.72	5.72	7.92	7.92	10.19	14.63
Pin Length	L1(Max)	20	34.3	34.3	39.7	25.7	45.3	37.2	37.2	48	61.6
Plate and Attachment Dimension	h2(Max)	11.8	11.8	11.8	14.7	16	16	24	24	26.4	33.3
Plate and Attachment Dimension	B	14.6	28.4	28.4	33.3	19.6	39.1	27.5	29.05	36	47
Plate and Attachment Dimension	C	24.2	24.2	24.2	30	36	36	46	49	57	72.6
Plate and Attachment Dimension	H	12.3	12.3	12.3	17	21	16	20	21.4	27	34
Plate and Attachment Dimension	T	1.6	1.5	1.5	1.7	1.85	1.85	2.42	1.6	3.5	4.5
Ultimate Tensile Strength	Q(Min)	18	32	32	44.5	29	57.8	42	58	66.5	112
Weight Per Meter	Q KG/M	1.19	2.07	2.07	2.56	2.01	3.21	3.97	3.83	6.19	11.85