

Palm Oil Chain

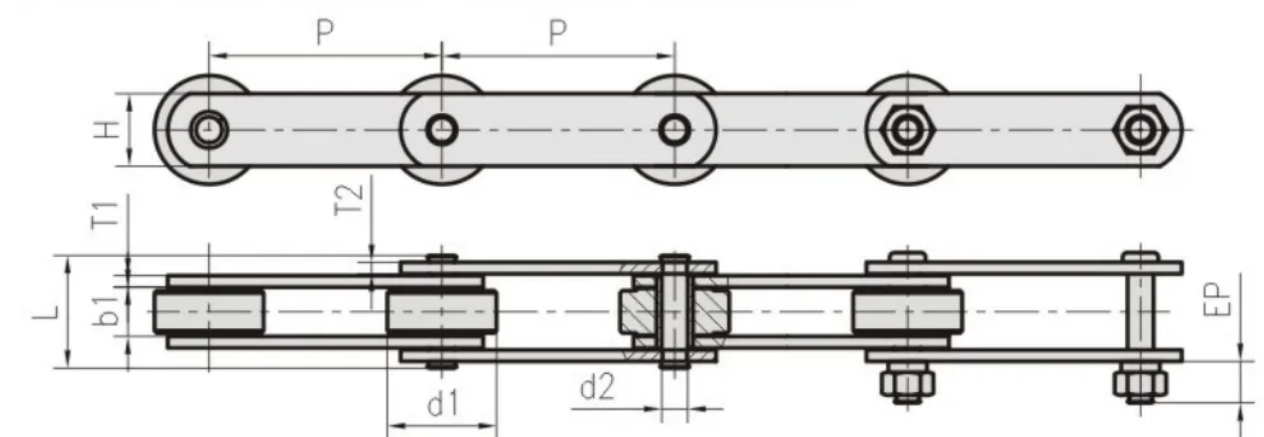


Features & Advantages



- Punching holes with double punching mould after attachment bending, ensuring same height upon coaxial and equal bearing force between two attachments
- Shot-peening technique for pin and plate, intensifying surface hardness, greatly improving chain's tensile strength
- Quadri-riveting on two sides of pin, preventing chain from part twirling and pin looseness under heavy-load circumstance

Technical Specifications



Email | sales@hdsusa.us

Tel | +1 (832) 808-5116 Tel | +1 (832) 808-5164



HDS Chain No.		P101.6-F4	P101.6-F5
Pitch	P/mm	101.6	101.6
Plate Depth	H(Max)	38.5	38.5
Plate Thickness	T1(Max)	5	5
Width Between Inner Plate	b1(Max)	18.2	18.2
Roller Diameter	d1(Max)	47.6	47.6
Pin Diameter	d2(Max)	19	19
Pin Length	L(Max)	48	58
Screw Thread Length	EP(Max)	23	/
Ultimate Tensile Strength	Q(Min) KN	97.8	97.8